

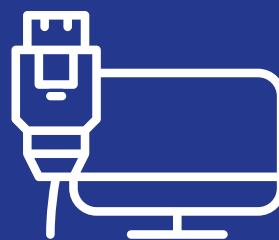
GETTING  
STARTED

# THE BASICS

---

# INTERNET

---



# Table of contents

---



## THE BASICS

- 1** GETTING CONNECTED
- 2** WIRED OR WIRELESS?
- 3** WIRED INTERNET – WHEN YOU NEED RELIABILITY
- 4** WI-FI – THE WIRELESS CHOICE
- 5** A PRIVATE WI-FI NETWORK
- 6** ADDITIONAL INTERNET OPTIONS
- 7** DRAWING UP A FLOOR PLAN IN 6 EASY STEPS

## 1 GETTING CONNECTED

---

### → CHOOSING THE RIGHT CONFIGURATION DEPENDS ON YOUR REQUIREMENTS:

- ◆ If your internet needs are modest (a few emails per day, and websites without many videos or images), 1 Mbps might be right for you.
- ◆ For a faster connection that provides unlimited access to websites with videos and images, a minimum of 4 Mbps might be the best choice.
- ◆ Similarly, if you need to give PowerPoint presentations, a higher bandwidth can be useful.
- ◆ You also need to keep in mind the number of computers and devices at your stand. It's easy to calculate – if you have ten computers, you will need a minimum of 10 Mbps.



### USEFUL TIP

Remember, there is free Wi-Fi at every one of our venues. It is limited to four hours per day per device, and operates only on the 2.4 GHz frequency.



### DID YOU KNOW?

- An ADSL connection offers faster speeds for downloads than for uploads. It is recommended when downloads are more important for you than uploads.
- A SDSL connection provides equal upload and download speeds.

## 2 WIRED OR WIRELESS?

With Wi-Fi, we are now used to consulting the Internet anywhere and at any time. In reality, the technology behind a good connection is complex. Trade fairs and conferences can attest to this. Groups of stands, rows of partitions, signage and crowds of visitors represent variables that can hamper access to the Wi-Fi network, since the slightest physical obstacle tends to disrupt the signal. These are some parameters to reflect on when choosing your connection.



### USEFUL TIP

Although most of today's smartphones use the 4 GHz frequency—the newest standard— some models continue use 2.4 GHz, an older frequency. To avoid unpleasant surprises, please check on the compatibility of your mobile phone before your event. A cellphone that uses the 2.4 GHz frequency will not function on 5 GHz, the current standard.



### OUR ADVICE

Whether in the city or at home, a Wi-Fi hotspot near to you generally provides an easy Internet connection. A standard Wi-Fi setup, however, is not always the best solution. For a stronger Wi-Fi installation (for demonstrations or if you have a sizeable network), it is advantageous to have a dedicated hotspot at your stand to ensure smooth browsing. Depending on your equipment, you can also opt for a wired Internet connection. To find out which option best suits your needs, please contact Viparis's Exhibitor Services.

## 3 WIRED INTERNET – WHEN YOU NEED RELIABILITY

If you are a heavy Internet user and require a great deal of bandwidth, an Ethernet connection provides a stable, secure environment.

- ◆ To make life easier, Viparis offers wired SDSL connections. Using the Dynamic Host Configuration Protocol (DHCP), an SDSL connection gives you access to a private IP address. Rates vary according to the bandwidth you order.
- ◆ Depending on the venue, cabling is either run in from the ceiling or via floor trenches. Where you choose to place your equipment is therefore critical. Don't forget to indicate this on your floor plan.
- ◆ If you have several devices to connect to the network, you can order additional services (switching, cabling, etc.) or fill out the quote request form.



### VIPARIS PROVIDES

- ☑ Delivery, installation and configuration of your equipment with an IP address.
- ☑ Technical support throughout the event

## 4 WI-FI – THE WIRELESS CHOICE

With our secure Expert Wi-Fi packages, you have a wide range of connection options: choice of bandwidth, a unique login, customised password, etc. Our goal is to satisfy your Internet requirements. If the available options (number of accounts and bandwidth) don't meet your needs, please contact Exhibitor Services for a quote for a customised Wi-Fi installation.

- ◆ Our Expert Wi-Fi packages provide you with a standard Wi-Fi network.
- ◆ You'll receive an Internet connection with one or more Wi-Fi accounts that can be used simultaneously, depending on the option chosen. This allows you to use all the devices at your stand (computers, tablets, smartphones, etc.), provided they are compatible with the 802.11 a/n (5 GHz) standard.
- ◆ Whichever network speed you choose (in Mbps), the bandwidth will be shared between your wired connection and the number of dedicated Wi-Fi accounts. For example, a 4 Mbps bandwidth would be distributed between a wired connection and 8 accounts.
- ◆ Expert Wi-Fi packages permit you to check your e-mail. This option is not recommended for strategic uses, such as order-taking, or for data-heavy uploads and downloads. For intensive use, we recommend you order an Ethernet connection or contact Exhibitor Services for a customised quote.



### USEFUL TIP

- Only certain computer equipment is compatible with this technology. You can check the compatibility of your devices on [www.gsmarena.com](http://www.gsmarena.com).
- There are rules governing the use of Wi-Fi networks. To learn more, please [click here](#).

## 5 A PRIVATE WI-FI NETWORK

Need your own personal Wi-Fi? We can take care of that. It's actually the best solution if you have a number of devices connected at once (computers and smartphones) or a large wireless setup (running applications, demonstrations, etc.).

- ◆ Depending on the bandwidth you need and the number of devices, Viparis can provide you with a made-to-measure solution. You'll get your own hotspot with a customised network name and password. In addition, you'll benefit from excellent bandwidth and a secure connection.
- ◆ If you want to set up your own private Wi-Fi network, please contact Exhibitor Services, who will inform you about rules that you need to follow.



### VIPARIS ENSURES

- ☑ Creation and activation of Wi-Fi accounts.
- ☑ Unlimited use.
- ☑ Technical support throughout your event.

For a quote to set up a Wi-Fi network just for your stand, please contact Exhibitor Services.

## 6 ADDITIONAL INTERNET OPTIONS

---

### → SWITCHES (ROUTERS), CONNECTION CABLES, CUSTOM PACKAGES :

If you have several devices to connect or to network, our additional services may be helpful. Everything you need to streamline your connection can be found in our «Internet» section, so that you can enjoy trouble-free browsing at your stand.



#### DID YOU KNOW?

For an Internet connection, a switch performs the same function as a power strip for electricity.

## 7 DRAWING UP A FLOOR PLAN IN 6 EASY STEPS

---

To ensure that your power source is installed in the best possible location, you need to provide us with a complete floor plan.

### There are six key parts to a good floor plan:

1. **Your stand's precise location:** indicating the location of aisles and adjacent stands will make it easy for our technical teams to find your stand.
2. **Surface area:** please provide us with your stand's dimensions. For example, indicate whether it is a 9 m<sup>2</sup> stand (3 m x 3 m).
3. **Shape:** Is your stand square, rectangular or N-shaped?
4. **Location:** We need to know where you want your Internet equipment installed. Please provide us with an accurate floor plan that indicates the location (marked with an «I»).
5. We need to know **the coordinates** of your stand (aisles, stand number and company name).
6. Indicating **the date the floor plan was created** and the date of the most recent update is a real help for the technical team.



For more information about our services, please call **+33 1 40 68 16 16**  
between **9 am and 6 pm, Monday to Friday.**

**We also have an online chat room.**

---